

ལྷོ་མ་སྡེ་ནང་ ལྷོ་མ་བཀོད་གྲུབ་པའི་ས་ཆ་སྡོད་ལེན་གི

བྱ་སྡོའི་རིམ་པ།



Thromde Thrams

- **Thrams of Core areas prepared by respective Thromdes**
- **Thrams of extended and peripheries handed over by DSLR/NLCS**

Thimphu Thromde in 1994 and 2002

Phuentsholing 2004

Gelephu 2012

- **Dzongkhag Thrams demarcated during NCRP**

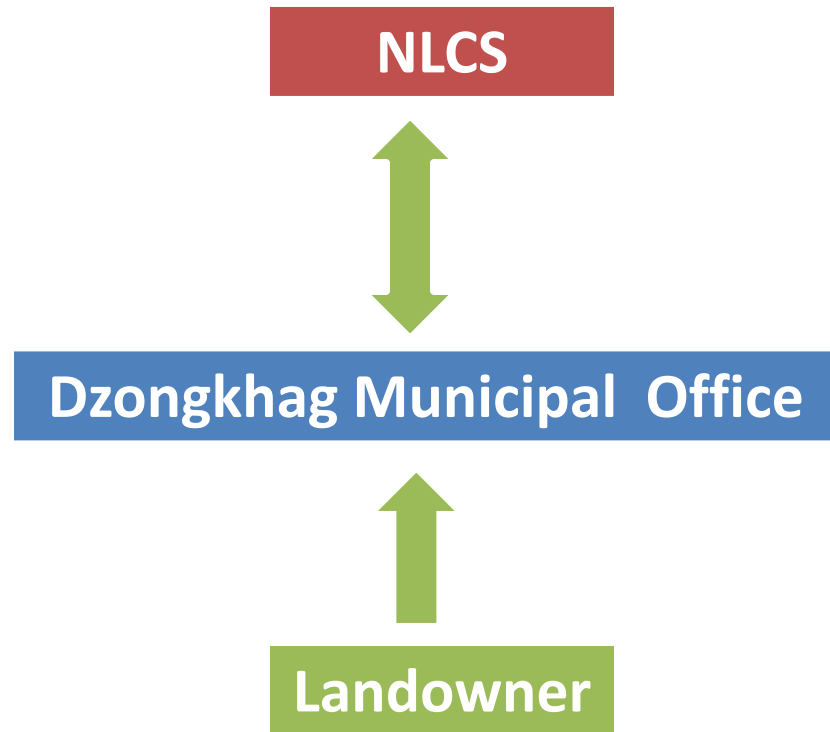
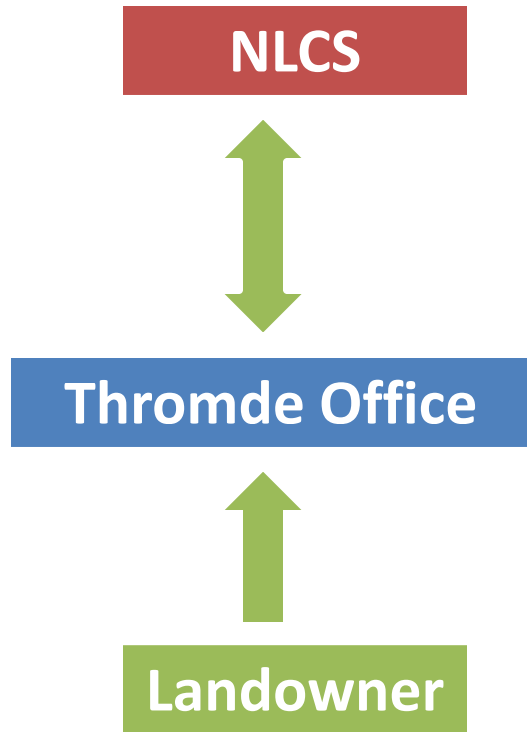
Difference between rural and urban

- **Forms** in English version
- **Processed by Thromdes for Thromde 'A'**
- **Processed by Dzongkhag municipalities for other Thromdes**
- **Transfer Tax**
- **Different land categories**
- **Unit of measurement in square feet**

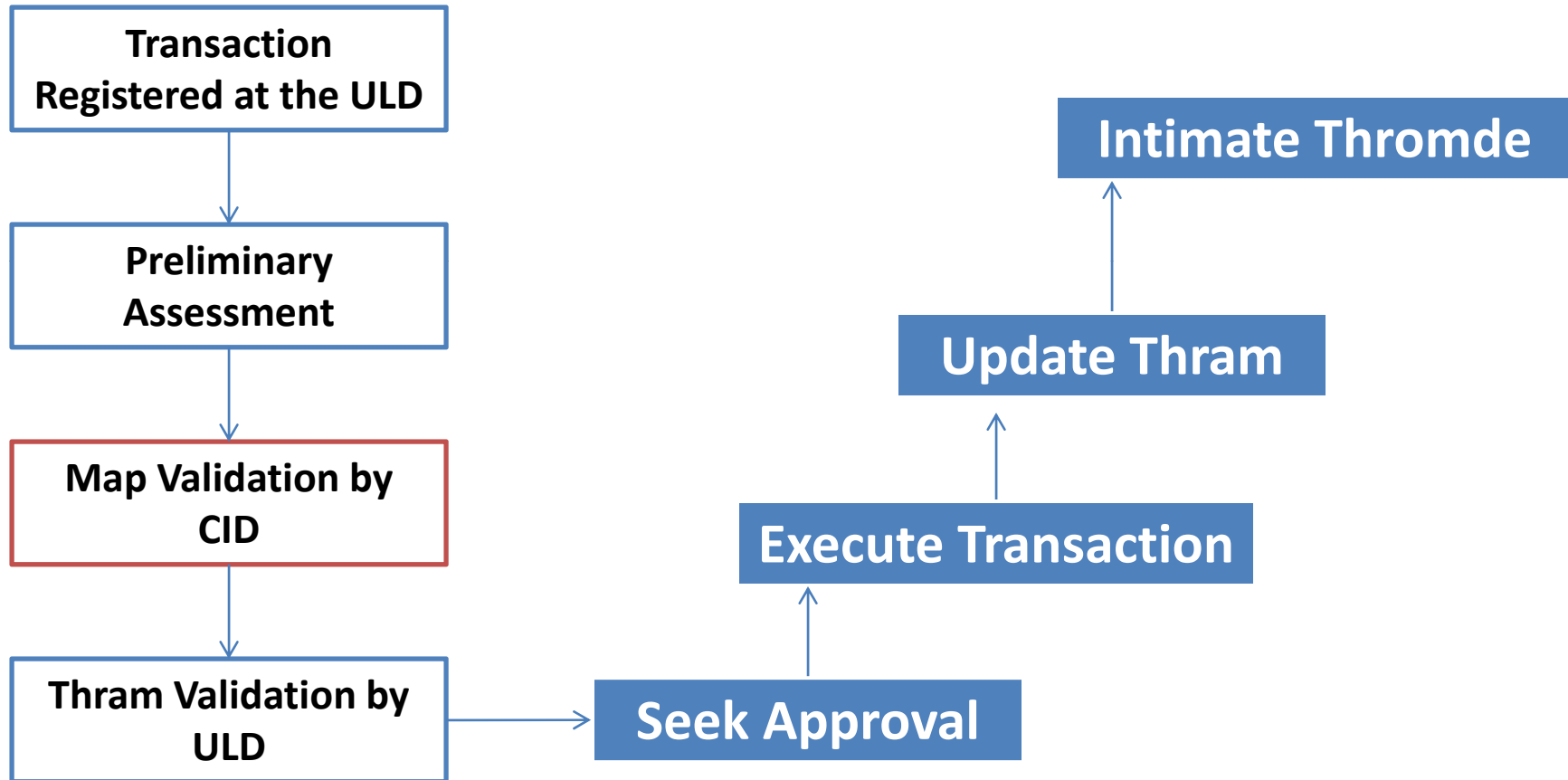
Difference between rural and urban

- **Strata Transaction**
- **Minimum plot size for development 7 decimals (3049 square feet)**
- **Minimum plot size for transaction: 13 decimals (5663 square feet)**
- **LAP and DCR determine minimum plot size**
- **Approved structural drawing of building**

General Process



Detail Process



Loss of Lagthram

- **Report to the NLCS**
- **Notification through media**
- **Inform financial institutes**
- **Issue new Lagthram**

བཀའ་དྲིན་ཆེ་ བགྲིས་བདེ་ལེགས་